

# Owner's Manual

This manual explains how to use an MV-8000 in which "System Program Version 3.50 is installed.

## About the symbols and icons in this manual

- **Text in square brackets [ ] refers to buttons on the panel of the MV-8000.**  
Buttons indicated as [F1 (sample)] refer to the F1 (function 1) button when the F1 function shown in the LCD is "Sample."
- **Where a range of values is shown, the default value is printed in bold type.**

For example, an indication of  
Range: **60**, 67, 72, 75 (Hz)  
means that 60 Hz is the default value.



Indicates information that you should be aware of when using the MV-8000.



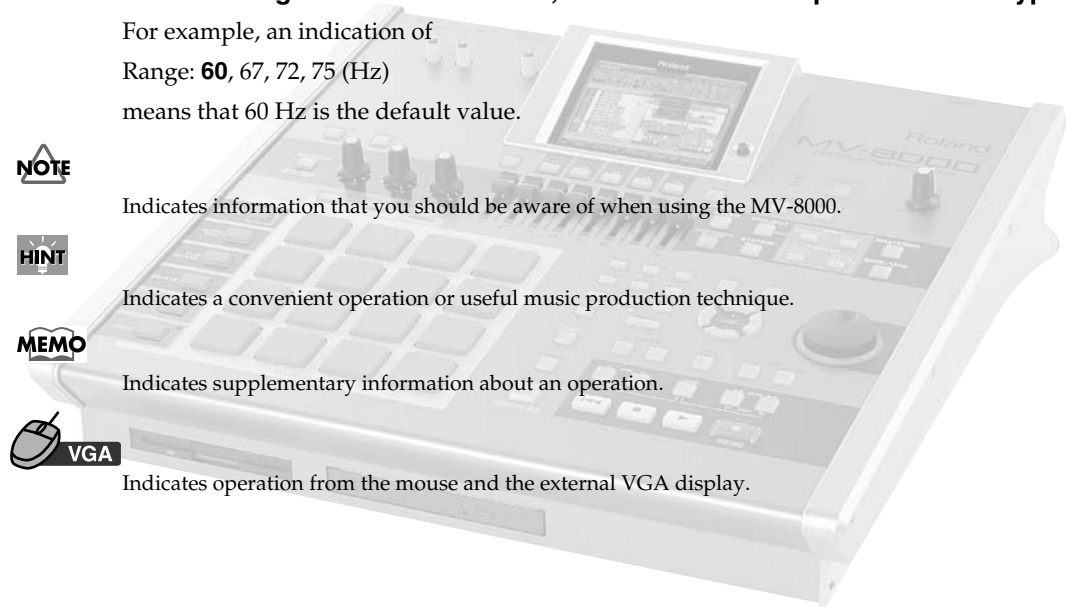
Indicates a convenient operation or useful music production technique.



Indicates supplementary information about an operation.



Indicates operation from the mouse and the external VGA display.



- Before using this unit, carefully read the sections entitled: "IMPORTANT SAFETY INSTRUCTIONS" (Owner's Manual p. 2), "USING THE UNIT SAFELY" (Owner's Manual p. 3), and "IMPORTANT NOTES" (Owner's manual p. 5). These sections provide important information concerning the proper operation of the unit. Additionally, in order to feel assured that you have gained a good grasp of every feature provided by your new unit, Quick Start and Owner's Manual should be read in its entirety. The manual should be saved and kept on hand as a convenient reference.
- The explanations in this manual include illustrations that depict what should typically be shown by the display. Note, however, that your unit may incorporate a newer, enhanced version of the system (e.g., includes newer sounds), so what you actually see in the display may not always match what appears in the manual.

©2005 Roland Corporation

All rights reserved. No part of this publication may be reproduced in any form without the written permission of ROLAND CORPORATION.

<http://www.roland.com/>

# An overview of version 3.5

## Added functionality

- **Mixer automation (p. 3)**  
Operations on the MIXER screen can now be recorded and recalled.
- **Track mute automation (p. 5)**  
Operations on the TRACK MUTE screen can now be recorded and recalled.
- **C-knob automation (p. 10)**  
Operations of the C-knob can now be recorded and recalled.
- **Transmit Program Changes to an external sound module (p. 12)**  
MIDI Program Changes can now be transmitted at the beginning of a Song or Pattern.
- **Pencil tool added (p. 13)**  
You can now enter note events on the VGA PIANO ROLL EDIT screen.
- **Continuous data generation and modification capability (p. 14)**  
You can now enter and edit data that has continuous values. This can be used to enter automation data into MIDI tracks.
- **Three-band equalizer added (p. 16)**  
You can now use the equalizer to adjust the tone.
- **Import Patch Preview function added (p. 18)**  
You can now preview and audition before importing Patches.

## Screens that have been added

- **MUTE CONTROL TRACK screen (p. 8)**
- **TRACK SELECT popup (p. 9)**
- **CREATE CONTINUOUS DATA popup (p. 14)**
- **CHANGE CONTINUOUS DATA popup (p. 15)**
- **MIXER (AUDIO TRACK EQ), MIXER (INSTRUMENTS PART 1-8 EQ), MIXER (INSTRUMENTS PART 9-16 EQ) screen (p. 16)**

# Automating mixing operations (Automation)

## Automating operations of Mixer Channel

The operations of the mixer parameter on the MIXER screens can be recorded on the sequencer (MIDI track).


### Mixer parameters that can be recorded and played back


Mixer operation data is recorded on a MIDI track as MIDI Control Change data. The following table shows the data that can be recorded and played back, and the MIDI Control Change numbers used for each type of data.

Parameters	MIDI Control Change Number
Level	7 (Volume)
Pan	10 (Pan)
Reverb Send	91 (Reverb: Effect 1 Depth)
DlyCho Send	93 (Chorus: Effect 3 Depth)

### Recording mixer operations for a Mixer Channel

1. Access the SEQUENCE screen or the PATTERN screen.
2. Move the current time to the location at which you want to start recording mixer operations.

3. Use  to select the MIDI track on which you want to record the Mixer Channel operations (movements).

4. Press  (Track Param).

The TRACK PARAMETER popup will appear.



#### MEMO

You can't record mixer operations for multiple Mixer Channels at the same time.

#### MEMO

You can't record operations of the Output parameter, Mute parameter, and EQ parameters on the MIXER screens.

#### MEMO

You can use the SEQUENCE EDIT screen, the PATTERN EDIT screen, or the EVENT LIST screen to edit a MIDI track on which you recorded mixer operations.

## Automating mixing operations (Automation)

- Use the Output Assign parameter to select the Mixer Channel for which you want to record/playback mixer operations.

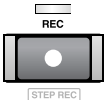
The following table shows the Mixer Channel that can be recorded and played back.

Mixer Channel	Value
AUX1	Mixer AUX1
AUX2	Mixer AUX2
AUX3	Mixer AUX3
AUX4	Mixer AUX4
Delay/Chorus	Mixer DlyCho
Reverb	Mixer Reverb
Audio Phrase	Mixer A.Phrs
Input	Mixer Input
Audio track 1-8	AMix *: (Audio track name) "*" shows Track Number.

Select the "AMix" for which you want to record mixer operation of Audio track.



- Press  and select the MIXER screen for which you want to record the Mixer Channel.

- Press  .

[REC] (red) indicator will blink, and the RECORDING PARAMETER (MIDI) popup will appear. Make recording settings as necessary.

- Press  .

[REC] (red) and [PLAY] (green) will light, and the RECORDING PARAMETER (MIDI) popup will close. Use the sliders or VALUE dial to adjust the mixer parameter values for the Mixer Channel you selected in step 5. The value changes will be recorded on the MIDI track.

- Press  to stop recording.

[REC] and [PLAY] will go dark, and recording will stop.

### MEMO

When you delete an Audio track, the Output Assign parameter will be switched Off for the MIDI track on which you recorded the mixer automation operations for that track.

## Playback mixer movements

- Move the current time to the location at which the mixer operations were recorded.

- Press  .

[PLAY] (green) will light. The Mixer parameters will change according to the data recorded on the MIDI track.

- Press  to stop playback.

[PLAY] will go dark, and playback will stop.



### HINT

By changing the Output Assign parameter setting for the MIDI track on which you recorded the mixer operations to other Mixer Channel, you can playback those same mixer operations on a different Mixer Channel.

# Automating mute operations for each track

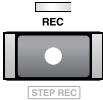
Mute settings for each track can be recorded on the Mute Control Track and played-back.

## Recording mute operations

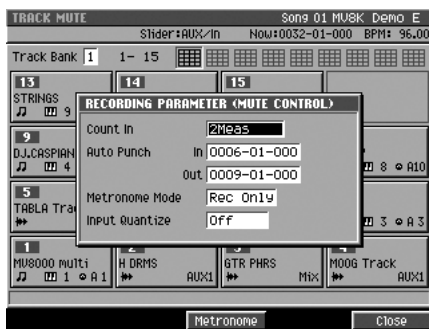
1. Hold down , and press .

The TRACK MUTE screen will appear.

2. Move the current time to the location at which you want to start recording mute operations.

3. Press .

[REC] (red) indicator will blink, and the RECORDING PARAMETER (MUTE CONTROL) popup will appear. Make recording settings as necessary.



- **Count In**

Specifies how recording will begin.

Value	Explanation
Off	Recording will begin the moment you press [PLAY].
1 Meas	When you press [PLAY], a count-in will sound from one measure earlier than the record-start location, and recording will begin at the record-start location.
2 Meas	When you press [PLAY], a count-in will sound from two measures earlier than the record-start location, and recording will begin at the record-start location.
Wait Note	Recording will begin the moment you press [PLAY].

- **Auto Punch**

Recording will begin (punch-in) and end (punch-out) automatically at the time locations you specify beforehand.

Parameter	Value
In	0001-01-000 – 9999-**-***
Out	0001-01-000 – 9999-**-***

- **Metronome Mode**

Specifies when the metronome signal will be output.

Value	Explanation
Off	The metronome will not sound.
Rec Only	The metronome will sound only during recording.
Play&Rec	The metronome will sound during playback and recording.
Always	The metronome will always sound.

## Automating mixing operations (Automation)

- **Input Quantize**

You can record into the sequencer while applying quantization.

Value: Off, ♩ (60), ♪₃ (80), ♪ (120), ♪₃ (160), ♪ (240), ♪₃ (320), ♪ (480)



[REC] (red) and [PLAY] (green) will light, and the RECORDING PARAMETER (MUTE CONTROL) popup will close. Strike the velocity pads to perform track mute operations. Mute operations will be recorded on the Mute Control Track.



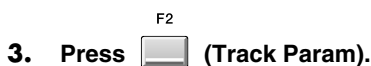
[REC] and [PLAY] will go dark, and recording will stop.



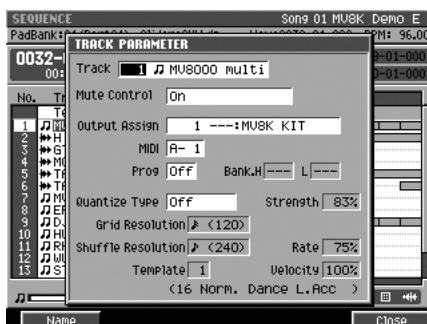
Recording will end automatically if you access any screen other than the TRACK MUTE screen (for example by pressing [EXIT]) while recording.

## Playback mute operations

1. Access the SEQUENCE screen or the PATTERN screen.



The TRACK PARAMETER popup will appear.



4. Use the Mute Control parameter to specify whether mute operations are to be played-back or not.

- **Mute Control**



Tracks will be muted/unmuted according to the track mute data recorded on the Mute Control Track.

Value	Explanation
Off	The recorded mute data will be disabled. Mute operations will not be played back.
On	The recorded mute data will be enabled.
On (Default=Off)	The recorded mute data will be enabled. With this setting, mute will automatically be disabled when you move the time location to the beginning of the track.
On (Default=On)	The recorded mute data will be enabled. With this setting, mute will automatically be applied when you move the time location to the beginning of the track.



The TRACK PARAMETER popup will close. If you want to enable/disable mute

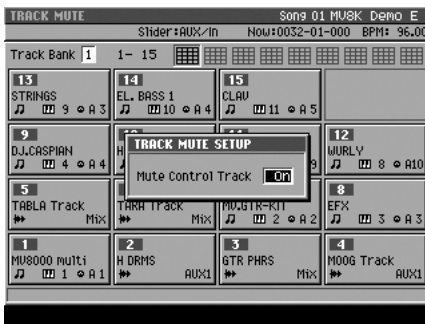
operations for other tracks, repeat steps 2–5.

6. Hold down , and press .

7. Press .

8. Use  to select “Track Mute Setup” and press  (Select).

The TRACK MUTE SETUP popup will appear.



9. Set the Mute Control Track parameter to On.

10. Press .

The TRACK MUTE SETUP popup will close.

11. Move the current time to the location at which the mute operations were recorded.

12. Press .

[PLAY] (green) will light. The mute settings of each track will change according to the mute data recorded on the Mute Control Track.

13. Press  to stop playback.

[PLAY] will go dark, and playback will stop.

### MEMO

The on/off status of the Mute Control Track parameter can be set for each Song and each Pattern.

### MEMO



The on/off status of the Mute Control Track parameter for a Song can also be set from the SONG PARAMETER screen.

### MEMO

The on/off status of the Mute Control Track parameter for a Pattern can also be set from the PATTERN PARAMETER screen.

## Editing the recorded mute data

In the MUTE CONTROL TRACK screen, you can edit the mute data that is recorded on the Mute Control Track. You can adjust the timing (measure-beat-tick) of the recorded mute data, or change the mute on/off status.

1. Hold down , and press .

The TRACK MUTE screen will appear.

2. Press .






3. Use  to select "Mute Control Track" and press  (Select).

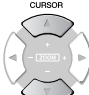
The MUTE CONTROL TRACK screen will appear.

MUTE CONTROL TRACK		Song 01 MUSK Demo E	
PadBank:01(Part01) Slider:AUX/in		Now:0009-01-371 BPM:107.00	
Event Position	Track	Mute	
0001-01-000	Track 1 JJ MUS8000 multi	Mute On	
	Track 1 JJ MUS8000 multi	Mute Off	
	Track 1 JJ MUS8000 multi	Mute Off	
	Track 1 JJ MUS8000 multi	Mute Off	
0004-04-164	Track 1 JJ MUS8000 multi	Mute On	
0005-02-262	Track 1 JJ MUS8000 multi	Mute Off	
04-272	Track 2 H DRMS	Mute On	
0006-02-183	Track 1 JJ MUS8000 multi	Mute On	
03-430	Track 2 H DRMS	Mute Off	
04-128	Track 1 JJ MUS8000 multi	Mute Off	
0007-01-105	Track 2 H DRMS	Mute On	
03-020	Track 2 H DRMS	Mute Off	
04-197	Track 1 JJ MUS8000 multi	Mute On	
0008-01-166	Track 1 JJ MUS8000 multi	Mute Off	

97% Free Track Select: All

Create Erase Copy Paste Track Sel

F button	Explanation.
F1  (Create)	Adds a new Mute data to the current location.
F2  (Erase)	Erases the Mute data at the cursor location. The erased data will be held in the temporary memory.
F3  (Copy)	Copies the Mute data at the cursor location into the temporary memory.
F4  (Paste)	The PASTE EVENT popup will appear. Adds the Mute data held in the temporary memory to the specified time.
F5  (Track Sel)	The TRACK SELECT screen (p. 9) will appear.

4. Use  or VALUE dial to select the mute data which you want to edit.

5. Use  to select the parameter which you want to change.

6. Use VALUE dial or  /  to change the value.

### HINT

You can access the MUTE CONTROL TRACK screen from the SEQUENCE (or PATTERN) screen. To access this screen, press [MENU], select "Mute Control Track", then press [F5 (Select)].



### HINT

To specify the value of a parameter, you can use the VALUE dial or [DEC]/[INC], or use the numeric keys to input the value directly. After using the numeric keys to input a value, press [ENTER] to finalize the input.



## Viewing the mute data of only a specific track

You can limit the mute data shown on the MUTE CONTROL TRACK screen so that you see only the single track you're interested in.

1. Hold down , and press .

The TRACK MUTE screen will appear.

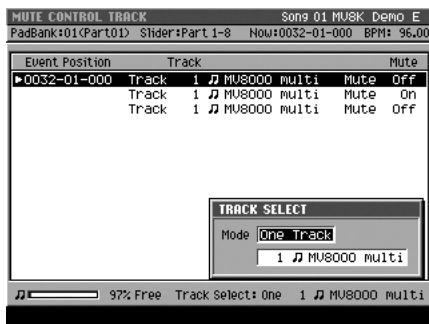
2. Press .

3. Use  to select "Mute Control Track" and press  (Select).

The MUTE CONTROL TRACK screen will appear.

4. Press  (Track Sel).

The TRACK SELECT popup will appear.



5. Specify the track number you want to view.

- **Mode**

Value	Explanation
All	The mute data of the all tracks will be shown.
One Track	Mute data of the single track you specify will be shown. Use the parameter below to select the track you want to view.

6. Press .


The TRACK SELECT popup will close.


# Automating operations for each C (Control) knob

The operations of the C1–C3 knobs assigned to MFX (multi-effects) parameters can be recorded on a MIDI track.

## Recording C (Control) knob operations

1. Assign the C (Control) knobs to the effect parameters you want to control, as described in “KNOB ASSIGN popup” in the MV-8000 owner’s manual.
2. Access the SEQUENCE screen or the PATTERN screen.

3. Use  to select the MIDI track on which you want to record the C knob operations (movements).

4. Press  (Track Param).

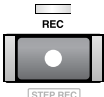
The TRACK PARAMETER popup will appear.



5. Set the Output Assign parameter to MFX.



6. Move the current time to the location at which you want to start recording the C knob operations.

7. Press .

[REC] (red) indicator will blink, and The RECORDING PARAMETER (MIDI) popup will appear. Make recording settings as necessary.

8. Press .

[REC] (red) and [PLAY] (green) will light, and the RECORDING PARAMETER (MIDI) popup will close. Use the C1–C3 knob to change effect parameters. Operations of the C1–C3 knobs will be recorded.

9. Press  to stop recording.

[REC] and [PLAY] will go dark, and recording will stop.

## Playback C (Control) knob operations to control effect parameters

1. Move the current time to the location at which the C knob operations were recorded.

2. Press  .

[PLAY] (green) will light. The C1–C3 knob operation data recorded on the MIDI track will control the effect parameters.

3. Press  to stop playback.

[PLAY] will go dark, and playback will stop.

### About the data recorded on the MIDI track

Data for the C-knob operations is recorded on the current MIDI track as MIDI Control Changes. The following table shows the recorded C-knob data and the MIDI Control Change numbers that are used.

Knob	MIDI Control Change Number
C1	16 (General 1)
C2	17 (General 2)
C3	18 (General 3)

#### MEMO

Automation only playback the operations of the C1–C3 knobs. It does not directly record the values of the effect parameters themselves. This means that if different effect parameters are assigned to the C1–C3 knobs when you play back the automation, the played back result will be different.


# Added Functionality in Sequencer

## Transmitting MIDI Program Changes at the beginning of a Pattern or Song

You can transmit MIDI Program Change at the time you start playback Song or Pattern from the beginning (0001-01-000). You can select the correct Patches (sounds) of external MIDI sound module at the beginning of playback when you are using an external MIDI sound modules.

1. **Select the Song (or Pattern) which you want to transmit MIDI Program Changes at the beginning, and access the SEQUENCE (or the PATTERN) screen.**

2. Use  to select the MIDI track on which you want to transmit the MIDI Program Change.

3. Press  (Track Param).

The TRACK PARAMETER popup will appear.



4. **Specify the parameters.**

Parameter	Value	Explanation
Prog	Off, 1-128	The Program Change Number you want to transmit.
BankH	---, 0-127	Value of the Bank Select MSB (CC #0).
(Bank) L	---, 0-127	Value of the Bank Select LSB (CC #32).

5. Press .

The TRACK PARAMETER popup will close.

6. Press .

The current time will return to the beginning of the Song (or Pattern).

7. Press .

[PLAY] (green) will light. The MIDI Program Change message and Bank Select message will be transmitted, playback will begin.

8. Press  to stop playback.

[PLAY] will go dark, and playback will stop.

### MEMO


Program Change message will not be transmitted if the Prog parameter is turned Off.

### MEMO

Bank Select messages will not be transmitted if Bank H or L is set to ---.



# Using the Pencil tool to enter note events on the VGA PIANO ROLL EDIT screen

When you click the Pencil button, the mouse pointer will change shape (  ). You can use the Pencil tool to enter note events.

**1. Click the Pencil button.**

You can enter the note event by clicking the mouse.



**2. Use the Step Time parameter to select the length (note value) of the note events you want to enter.**

**3. Use the Duration and Velocity parameters to specify the duration (the time that the note will actually sound, relative to the Step Time) and velocity (the strength of the note) of the note event.**

**4. Click the position that corresponds to the pitch you want to enter.**

A note event of the specified length will be entered where you click.

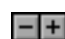
**5. Press .**


The VGA PIANO ROLL EDIT screen will close.


**HINT**

Click this bar, you can move the displayed portion of the range of sound (note number).

**HINT**

Click , expand (+) or shrink (-) the time axis of the display area (zoom).

The  direction will narrow (zoom-in) the displayed area. It's convenient to zoom-in on a specific area if you've input numerous closely-spaced notes.


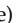
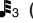
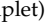


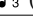

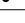
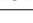


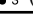
The  direction will wide (zoom-out) the displayed area. Zoom out to view more data.

**HINT**

The value of each parameter will maintain the setting that was entered most recently. If the next note you want to enter is to have the same values, you can simply leave these parameters unchanged. In other words, once you have specified the Duration parameter or Velocity parameter, you can often leave them unchanged while you enter the rest of the notes; simply click the mouse successively on the pitches at which you want to enter notes.

## Note length (Step time) and the number of ticks

The MV-8000's sequencer divides each quarter note into 480 "ticks." The following table shows the number of ticks in each note value.

Note	Number of ticks	Note	Number of ticks
 (64th note)	30	 (quarter note)	480
 (32nd note triplet)	40	 (half-note triplet)	640
 (32nd note)	60	 (half note)	960
 (16th note triplet)	80	 (whole note)	1920
 (16th note)	120	 (double whole note)	3840
 (8th note triplet)	160	Phrase	The length of an Audio Phrase.
 (8th note)	240	Pattern	The length of a Pattern.
 (quarter note triplet)	320		

**MEMO**

The length that a recorded note will actually continue sounding will be the number of ticks in the note value multiplied by the Duration parameter. For example if the Duration parameter is "80%", a quarter note will actually sound for a length of 480 x 0.80 = 384 ticks.

**MEMO**

You can choose Phrase for the Step Time parameter only if you're on the STEP REC (AUDIO) screen. You can choose Pattern for the Step Time parameter only if you're on the STEP REC (PATTERN) screen.

**MEMO**

The parameter located at the right of the Step Time parameter lets you specify a dotted note.

Dot	The specified the proportion of the note
none	1 time (The length is same as the Step Time).
one (.)	1.5 times (a dotted note).
two (..)	1.75 times (a double dotted note)

## Entering data with a smooth succession of values (Create Continuous Data)

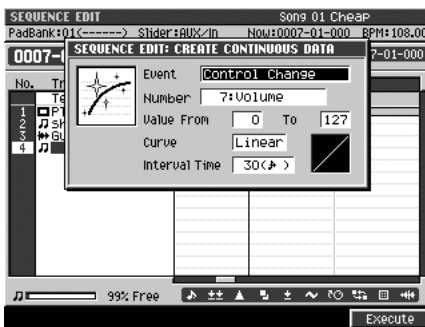
You can enter automation data (p. 3) containing values that change continuously over time, such as Volume data or Pan data.

- As described in steps 1–6 of “Using the SEQUENCE EDIT screen to edit” in the MV-8000 owner’s manual, select the region for which you want to enter data.

- Press  (Command), select “Create Continuous Data...” and press

 (Select).

The CREATE CONTINUOUS DATA popup will appear.



- Specify the parameters.

- Event**

Specify the type of data that you want to enter.

Value: **Control Change**, Channel Aftertouch, Poly Aftertouch, Pitch Bend

- Number**

If you specified Control Change as the Event, you can also specify the Control Change number that you want to enter.

Value: 0:BankSel MSB - **7:Volume** - 119:

- Note**

If you specified Poly Aftertouch as the Event, you can also specify the Note number that you want to enter.

Value: 0 (C -) - **60 (C 4)** - 127 (G 9)

- Value From**

Specify the initial value at the starting point of the continuous data.

Value (Control Change, Channel Aftertouch, Poly Aftertouch): **0** - 127

Value (Pitch Bend): -8192 - **0** - 8191

- To**

Specify the destination value at the ending point of the continuous data.

Value (Control Change, Channel Aftertouch, Poly Aftertouch): 0 - **127**

Value (Pitch Bend): -8192 - **0** - 8191

- Curve**

Specifies the kind of the change in data.

Value: -3, -2, -1, **Linear**, +1, +2, +3

- Interval Time**

Specify the spacing (in ticks) between events of the continuous data.

Value: 1 - **30** - 999

- Press  (Execute).

The continuous data will be created on the MIDI track.

### MEMO

The Number parameter is shown only if you choose Control Change as the Event parameter.

The Note Parameter is shown only if you choose Poly Aftertouch as the Event parameter.

# Modifying data in a selected region (Change Continuous Data)

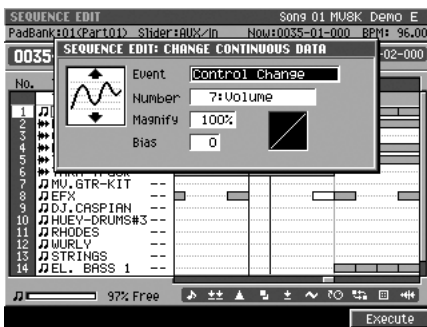
You can modify data such as volume and pan changes for automation in a selected region.

- As described in steps 1–6 of “Using the SEQUENCE EDIT screen to edit” in the MV-8000 owner’s manual, select the region for which you want to edit data.

- Press  (Command), select “Change Continuous Data...” and press

-  (Select).

The CHANGE CONTINUOUS DATA popup will appear.



- Specify the parameters.

- Event**

Specify the type of data that you want to edit.

Value: Control Change, Channel Aftertouch, Poly Aftertouch, Pitch Bend

- Number**

If you specified Control Change as the Event, you can also specify the Control Change number that you want to edit.

Value: 0:BankSel MSB - **7:Volume** - 119:

- Note Range**

If you specified Poly Aftertouch as the Event, you can also specify the range of Note number that you want to edit.

Value (Lower limit): **0 (C -)** - 127 (G 9)

Value (Upper limit): 0 (C -) - **127 (G 9)**

- Magnify**

Use this to increase or decrease the upper limit or lower limit of the selected values. With a setting of 100%, no change will occur. Use a setting of 101% or above to make the changes greater, and a setting of 99% or below to make the changes smaller. For example, a setting of 50% would halve the values and a setting of 200% would double the values. Negative “-” settings will invert the upper and lower limit values.

Value: -200% - **100%** - 200%

- Bias**

This parameter specifies the amount by which the data will be increased or decreased.

Value (Control Change, Channel Aftertouch, Poly Aftertouch): -99 - **0** - 99

Value (Pitch Bend): -999 - **0** - 999

- Press  (Execute).

The data you selected will be modified.

### MEMO

The Number parameter is shown only if you choose Control Change as the Event parameter.  
The Note Range Parameter is shown only if you choose Poly Aftertouch as the Event parameter.

# Added Functionality in Mixer

## Adjusting the tone of an Instruments or Audio track

Each Part of Instruments and the mixer section of each Audio track has a 3-band EQ (equalizer).




You can use this equalizer to adjust the tone.

### MIXER

1. Press .

The MIXER screen will appear.

2. Press the function buttons to switch the mixer you want to adjust tones by equalizer.


F button	Screen displayed
F1  (Audio track)	MIXER (AUDIO TRACK) screen
F2  (Part 1-8)	MIXER (INSTRUMENTS PART 1-8) screen
F3  (Part 9-16)	MIXER (INSTRUMENTS PART 9-16) screen

3. Press  (→EQ).

The screen will show the EQ screen for the mixer you selected in step 2.



Mixer selected	Screen displayed
Audio track	MIXER (AUDIO TRACK EQ) screen
Part 1-8	MIXER (INSTRUMENTS PART 1-8 EQ) screen
Part 9-16	MIXER (INSTRUMENTS PART 9-16 EQ) screen

4. Use  to move the cursor to the equalizer parameters on which you want to adjust.

### HINT

While the EQ screen is displayed, repeatedly pressing the [MIXER] button will cycle through the screens in the following order:

MIXER (AUDIO TRACK)

↓

MIXER (INSTRUMENTS PART 1-8)

↓

MIXER (INSTRUMENTS PART 9-16)

↓

MIXER (AUDIO TRACK)

### MEMO



The MIXER screen accessed by pressing [F4 (AUX/Phrs/In)] does not have an equalizer function.

### MEMO

Pressing [F5 (→EQ)] will display the EQ screen, and pressing [F5 (→Level/Pan)] will display the MIXER screen. The [F5 (→EQ)] and [F5 (→Level/Pan)] functions will alternate each time you press the button.



Parameter	Value	Explanation
EQ Sw	Off, On	Switches the status (On/Off) of equalizer.
EQ High	Gain [dB]	-15 - 0 - +15
	Freq [Hz]	1000, 1120, 1250, 1400, 1600, 1800, 2000, 2240, 2500, 2800, <b>3150</b> , 3550, 4000, 4500, 5000, 5600, 6300, 7100, 8000, 9000, 10k
EQ Mid	Gain [dB]	-15 - 0 - +15
	Freq [Hz]	100, 112, 125, 140, 160, 180, 200, 224, 250, 280, 315, 355, 400, 450, 500, 560, 630, 710, 800, 900, <b>1000</b> , 1120, 1250, 1400, 1600, 1800, 2000, 2240, 2500, 2800, 3150, 3550, 4000, 4500, 5000, 5600, 6300, 7100, 8000, 9000, 10k
	Q	<b>0.5</b> , 0.6, 0.7, 0.8, 0.9, 1.0, 1.1, 1.2, 1.4, 1.6, 1.8, 2.0, 2.2, 2.5, 2.8, 3.1, 3.5, 4.0, 4.5, 5.0, 5.6, 6.3, 7.1, 8.0, 9.0, 10.0, 11.2, 12.5, 14.0, 16.0
EQ Low	Gain [dB]	-15 - 0 - +15
	Freq [Hz]	<b>100</b> , 112, 125, 140, 160, 180, 200, 224, 250, 280, 315, 355, 400, 450, 500, 560, 630, 710, 800, 900, 1000

5. Use the VALUE dial or  /  to adjust.

The value of the selected parameter will change.

# Added Functionality in Import

## Auditioning or previewing before you import

You can audition a Patch before actually loading and using it.

Let's try auditioning a pre-installed Patch before actually loading it for use.

### Types of Patches that can be auditioned/previewed

- MV-8000 Patches (File extension “.MV0”)
- Roland S-7x0 series Patches
- AKAI MPC2000/2000XL series program (File extension “.PGM”)
- AKAI S1000/S3000 series program (File extension “.A1P”, “.A3P”)

1. Insert the disk (floppy disk or CD-ROM) containing the Patch data you want to import into the drive.

2. Press  .

The IMPORT screen will appear.

3. Press  (Select Drive).

The SELECT DRIVE popup will appear.

4. Use  to select disk containing the Patch data you want to import,

and press  (Select).

The contents of the disk will be displayed.

5. Use  to select the Patch data you want to import.

6. Press  (Preview).

The IMPORT PREVIEW popup will appear.

The screen will indicate “Reading patch for preview...” and loading will begin.

When all the data has been loaded, the IMPORT PREVIEW popup window will show the name of the Patch that was loaded.

### MEMO

MV-8000 Patches (filename extension “.MV0”) can also be auditioned/previewed from the LOAD PATCH screen.

### MEMO



Depending on the Patch being loaded, it may take some time until you can preview or audition the Patch.

### MEMO

Only the Patch that is highlighted in step 5 can be auditioned/previewed/imported on the IMPORT PREVIEW popup.



7. Strike  to audition the Patch.

8. If you decided to import the Patch, press  (Import). If you're finished auditioning/previewing, press  (Stop).

When you press [F5 (Import)], the ASSIGN TO PART/LIBRARY popup window will appear. Specify the parameter "Part" and "Library," then press [F5 (Execute)].

### **If the display indicates "Wave memory is not enough to preview."**

The MV-8000's wave memory is not enough. No further audio data can be auditioned or previewed, and therefore this Patch data could not be auditioned or previewed.

#### **MEMO**

You can change the range of key (partial) if you switch the pad bank

#### **MEMO**

You can audition the sound from the connected external MIDI keyboard.

## Information

When you need repair service, call your nearest Roland Service Center or authorized Roland distributor in your country as shown below.

### AFRICA

#### EGYPT

Al Fanny Trading Office  
9, EBN Hagar Al Askalany  
Street,  
ARD El Golf, Heliopolis,  
Cairo 11341, EGYPT  
TEL: 20-2-417-1828

#### REUNION

Maison FO - YAM Marcel  
25 Rue Jules Hermann,  
Chaudron - BP79 97 491  
Ste Clotilde Cedex,  
REUNION ISLAND  
TEL: (0262) 218-429

#### SOUTH AFRICA

That Other Music Shop(PTY)Ltd.  
11 Melle St., Braamfontein,  
Johannesburg,  
SOUTH AFRICA  
TEL: (011) 403 4105  
FAX: (011) 403 1234

Paul Bothner(PTY)Ltd.  
Royal Cape Park, Unit 24  
Londonderry Road, Ottery 7800  
Cape Town, SOUTH AFRICA  
TEL: (021) 799 4900

### ASIA

#### CHINA

Roland Shanghai Electronics  
Co., Ltd.  
5F, No.1500 Pingliang Road  
Shanghai 20090, CHINA  
TEL: (021) 5580-0800

Roland Shanghai Electronics  
Co., Ltd.  
(BEIJING OFFICE)  
10F, No.18 3 Section Anhuaxili  
Chaoyang District Beijing  
100011 CHINA  
TEL: (010) 6426-5050

Roland Shanghai Electronics  
Co., Ltd.  
(GUANGZHOU OFFICE)  
2/F, No.30 Si You Nan Er Jie  
Yi Xiang, Wu Yang Xin Cheng,  
Guangzhou 510600, CHINA  
TEL: (020) 8736-0428

#### HONG KONG

Tom Lee Music Co., Ltd.  
Service Division  
22-32 Pun Shan Street, Tuen  
Wan, New Territories,  
HONG KONG  
TEL: 2415 0911

Parsons Music Ltd.  
8th Floor, Railway Plaza, 39  
Chatham Road South, T.S.T,  
Kowloon, HONG KONG  
TEL: 2333 1863

#### INDIA

Rivera Digitec (India) Pvt. Ltd.  
409, Nirman Kendra  
Mahalaxmi Flats Compound  
Off. Dr. Edwin Moses Road,  
Mumbai-400011, INDIA  
TEL: (022) 2493 9051

#### INDONESIA

PT Citra IntiRama  
Jl. Cideng Timur No. 15J-150  
Jakarta Pusat  
INDONESIA  
TEL: (021) 6324170

#### KOREA

Cosmos Corporation  
1461-9, Seocho-Dong,  
Seocho Ku, Seoul, KOREA  
TEL: (02) 3486-8855

#### MALAYSIA

Roland Asia Pacific Sdn. Bhd.  
45-1, Block C2, Jalan PJU 1/39,  
Dataran Prima, 47301 Petaling  
Jaya, Selangor, MALAYSIA  
TEL: (03) 7805-3263

#### PHILIPPINES

G.A. Yungco & Co. Inc.  
339 Gil J. Puyat Avenue  
Makati, Metro Manila 1200,  
PHILIPPINES  
TEL: (02) 899 9801

#### SINGAPORE

SWEET LEE MUSIC  
COMPANY PTE. LTD.  
150 Sims Drive,  
SINGAPORE 387381  
TEL: 6846-3676

#### TAIWAN

ROLAND TAIWAN  
ENTERPRISE CO., LTD.  
Room 5, 9fl. No. 112 Chung  
Shan N.Road Sec.2, Taipei,  
TAIWAN, R.O.C.  
TEL: (02) 2561 3339

#### THAILAND

Theera Music Co., Ltd.  
330 Soi Verg, NakornKasem,  
New Road, Sumpantawongse,  
Bangkok 10100, THAILAND  
TEL: (02) 224-8821

#### VIETNAM

SAIGON MUSIC  
DISTRIBUTOR  
(TAN DINH MUSIC)  
138 Tran Quang Khai Street  
Dist. 1, Ho Chi Minh City  
VIETNAM  
TEL: (08) 848-4068

### AUSTRALIA/ NEW ZEALAND

#### AUSTRALIA/ NEW ZEALAND

Roland Corporation  
Australia Pty., Ltd.  
38 Campbell Avenue  
Dee Why West, NSW 2099  
AUSTRALIA

For Australia  
Tel: (02) 9982 8266  
For New Zealand  
Tel: (09) 3098 715

### CENTRAL/LATIN AMERICA

#### ARGENTINA

Instrumentos Musicales S.A.  
Av. Santa Fe 2055  
(1123) Buenos Aires  
ARGENTINA  
TEL: (011) 4508-2700

#### BARBADOS

A&B Music Supplies LTD  
12 Webster Industrial Park  
Wildely, St. Michael, Barbados  
TEL: (246)430-1100

#### BRAZIL

Roland Brasil Ltda.  
Rua San Jose, 780 Sala B  
Parque Industrial San Jose  
Coñia - Sao Paulo - SP, BRAZIL  
TEL: (011) 4615 5666

#### CHILE

Comercial Fancy II S.A.  
Rut. 96.919.420-1  
Nataliel Cox #739, 4th Floor  
Santiago - Centro, CHILE  
TEL: (02) 688-9540

#### COLOMBIA

Centro Musical Ltda.  
Cra 43 B No 25 A 41 Bododega 9  
Medellin, Colombia  
TEL: (574)3812529

#### COSTA RICA

JUAN Bansbach Instrumentos  
Musicales  
Ave.1. Calle 11, Apartado 10237,  
San Jose, COSTA RICA  
TEL: 258-0211

#### CURACAO

Zeelandia Music Center Inc.  
Orionweg 30  
Curacao, Netherland Antilles  
TEL:(305)5926866

#### DOMINICAN REPUBLIC

Instrumentos Fernando Giraldez  
Calle Proyecto Central No.3  
Ens.La Esperilla  
Santo Domingo,  
Dominican Republic  
TEL:(809) 683 0305

#### ECUADOR

Mas Musica  
Rumichaca 822 y Zaruma  
Guayaquil - Ecuador  
TEL:(593-4)2302364

#### EL SALVADOR

OMNI MUSIC  
75 Avenida Norte y Final  
Alameda Juan Pablo II,  
Edificio No.4010 San Salvador,  
EL SALVADOR  
TEL: 262-0788

#### GUATEMALA

Casa Instrumental  
Calzada Roosevelt 34-01, zona 11  
Ciudad de Guatemala  
Guatemala  
TEL:(502) 599-2888

#### HONDURAS

Almacen Pajaro Azul S.A. de C.V.  
BO.Paz Barahona  
3 Ave.11 Calle S.O  
San Pedro Sula, Honduras  
TEL: (504) 553-2029

#### MARTINIQUE

Musique & Son  
ZI Les Mangle  
97232 Le Lamantin  
Martinique F.W.I.  
TEL: 596 596 426860

#### Gigamusic SARI

10 Rte De La Folie  
97200 Fort De France  
Martinique F.W.I.  
TEL: 596 596 715222

#### MEXICO

Casa Veerkamp, s.a. de c.v.  
Av. Toluca No. 323, Col. Olivar  
de los Padres 01780 Mexico  
D.F. MEXICO  
TEL: (55) 5668-6699

#### NICARAGUA

Bansbach Instrumentos  
Musicales Nicaragua  
Altamira D'Este Calle Principal  
de la Farmacia 5ta. Avenida  
1 Cuadra al Lago. #503  
Managua, Nicaragua  
TEL: (505)277-2557

#### PANAMA

SUPRO MUNDIAL, S.A.  
Boulevard Andrews, Albrook,  
Panama City, REP. DE  
PANAMA  
TEL: 315-0101

#### PARAGUAY

Distribuidora De  
Instrumentos Musicales  
J.E. Olear y ESQ. Manduvira  
Asuncion PARAGUAY  
TEL: (595) 21 492147

#### PERU

Audionet  
Distribuciones Musicales SAC  
Juan Fanning 530  
Miraflores  
Lima - Peru  
TEL: (511) 4461388

#### TRINIDAD

AMR Ltd  
Ground Floor  
Maritime Plaza  
Barataria Trinidad W.I.  
TEL: (868) 638 6385

#### URUGUAY

Todo Musica S.A.  
Francisco Acuna de Figueroa  
1771  
C.P.: 11.800  
Montevideo, URUGUAY  
TEL: (02) 924-2335

#### VENEZUELA

Instrumentos Musicales  
Allegro, C.A.  
Av. las industrias edf. Guitarr  
import  
#7 zona Industrial de Turumo  
Caracas, Venezuela  
TEL: (212) 244-1122

### EUROPE

#### AUSTRIA

Roland Elektronische  
Musikinstrumente HmbH.  
Austrian Office  
Eduard-Bodem-Gasse 8,  
A-6020 Innsbruck, AUSTRIA  
TEL: (0512) 26 44 260

#### BELGIUM/FRANCE/ HOLLAND/ LUXEMBOURG

Roland Central Europe N.V.  
Houtstraat 3, B-2260, Oevel  
(Westerlo) BELGIUM  
TEL: (014) 575811

#### CZECH REP.

K-AUDIO  
Kardasovska 626.  
CZ-198 00 Praha 9,  
CZECH REP.  
TEL: (2) 666 10529

#### DENMARK

Roland Scandinavia A/S  
Nordhavnsvej 7, Postbox 880,  
DK-2100 Copenhagen  
DENMARK  
TEL: 3916 2200

#### FINLAND

Roland Scandinavia As, Filial  
Finland  
Elannonite 5  
FIN-01510 Vantaa, FINLAND  
TEL: (09) 68 24 020

#### GERMANY

Roland Elektronische  
Musikinstrumente HmbH.  
Oststrasse 96, 22844  
Norderstedt, GERMANY  
TEL: (040) 52 60090

#### GREECE

STOLLAS S.A.  
Music Sound Light  
155, New National Road  
Patras 26442, GREECE  
TEL: 2610 435400

#### HUNGARY

Roland East Europe Ltd.  
Warehouse Area "DEPO" Pf.83  
H-2046 Torokbalint,  
HUNGARY  
TEL: (23) 511011

#### IRELAND

Roland Ireland  
G2 Calmout Park, Calmout  
Avenue, Dublin 12  
Republic of IRELAND  
TEL: (01) 4294444

#### ITALY

Roland Italy S. p. A.  
Viale delle Industrie 8,  
20020 Arese, Milano, ITALY  
TEL: (02) 937-78300

#### NORWAY

Roland Scandinavia Avd.  
Kontor Norge  
Lilleakerveien 2 Postboks 95  
Lilleaker N-0216 Oslo  
NORWAY  
TEL: 2273 0074

#### POLAND

MX MUSIC SP.Z.O.O.  
UL. Gibraltarska 4,  
PL-03664 Warszawa POLAND  
TEL: (022) 679 44 19

#### PORTUGAL

Roland Iberia, S.L.  
Portugal Office  
Cais das Pedras, 8/9-1 Dto  
4050-465, Porto, PORTUGAL  
TEL: 22 608 00 60

#### ROMANIA

FBS LINES  
Piata Libertatii 1,  
535500 Gheorgheni,  
ROMANIA  
TEL: (266) 364 609

#### RUSSIA

MuTek  
Dorozhnaya ul.3, korp.6  
117 545 Moscow, RUSSIA  
TEL: (095) 981-4967

#### SPAIN

Roland Iberia, S.L.  
Paseo Garcia Faria, 33-35  
08005 Barcelona SPAIN  
TEL: 93 493 91 00

#### SWEDEN

Roland Scandinavia A/S  
SWEDISH SALES OFFICE  
Danvik Center 28, 2 tr.  
S-131 30 Nacka SWEDEN  
TEL: (08) 702 00 20

#### SWITZERLAND

Roland (Switzerland) AG  
Landstrasse 5 Postfach,  
CH-4452 Itingen,  
SWITZERLAND  
TEL: (061) 927-8383

#### UKRAINE

TIC-TAC  
Mira Str. 19/108  
P.O. Box 180  
295400 Munkachevo,  
UKRAINE  
TEL: (03131) 414-40

#### UNITED KINGDOM

Roland (U.K.) Ltd.  
Atlantic Close, Swansea  
Enterprise Park, SWANSEA  
SA7 9JF,  
UNITED KINGDOM  
TEL: (01792) 702701

### MIDDLE EAST

#### BAHRAIN

Moon Stores  
No.16, Bab Al Bahrain Avenue,  
P.O.Box 247, Manama 304,  
State of BAHRAIN  
TEL: 17 211 005

#### CYPRUS

Radex Sound Equipment Ltd.  
17, Diagorou Street, Nicosia,  
CYPRUS  
TEL: (022) 66-9426

#### IRAN

MOCO INC.  
No.41 Nike St., Dr.Shariyati Ave.,  
Roberoye Cerahe Mirdamad  
Tehran, IRAN  
TEL: (021) 285-4169

#### ISRAEL

Haliit P. Greenspoon & Sons  
Ltd.  
8 Retzif Ha'aliya Hashnya St.  
Tel-Aviv-Yafo ISRAEL  
TEL: (03) 6823666

#### JORDAN

MUSIC HOUSE CO. LTD.  
FREDDY FOR MUSIC  
P. O. Box 922846  
Amman 11192 JORDAN  
TEL: (06) 5692696

#### KUWAIT

EASA HUSAIN AL-YOUSIFI  
& SONS CO.  
Abdullah Salem Street,  
Safat, KUWAIT  
TEL: (022) 679 44 19

#### LEBANON

Chahine S.A.L.  
Gerge Zeidan St., Chahine  
Bldg., Achrafieh, P.O.Box: 16-  
5857  
Beirut, LEBANON  
TEL: (01) 20-1441

#### OMAN

TALENTZ CENTRE L.L.C.  
Malatan House No.1  
Al Noor Street, Ruwi  
SULTANATE OF OMAN  
TEL: 2478 3443

#### QATAR

Al Emadi Co. (Badie Studio &  
Stores)  
P.O. Box 62, Doha, QATAR  
TEL: 4423-554

#### SAUDI ARABIA

aDawiah Universal  
Electronics APL  
Corniche Road, Aldossary  
Bldg., 1st Floor, Alkhobar,  
SAUDI ARABIA

P.O. Box 2154, Alkhobar 31952  
SAUDI ARABIA  
TEL: (03) 898 2081

#### SYRIA

Technical Light & Sound  
Center  
Rawda, Abdul Qader Zajzari St.  
Bldg. No. 21, P.O.BOX 13520,  
Damascus, SYRIA  
TEL: (011) 223-5384

#### TURKEY

ZUHAL DIS TICARET A.S.  
Galip Dede Cad. No.37  
Beyoglu - Istanbul / TURKEY  
TEL: (0212) 249 85 10

#### U.A.E.

Zak Electronics & Musical  
Instruments Co. L.L.C.  
Zabeel Road, Al Sherooq Bldg.,  
No. 14, Grand Floor, Dubai,  
U.A.E.  
TEL: (04) 3360715

### NORTH AMERICA

#### CANADA

Roland Canada Music Ltd.  
(Head Office)  
5480 Parkwood Way  
Richmond B. C., V6V 2M4  
CANADA  
TEL: (604) 270 6626

#### Roland Canada Music Ltd.

(Toronto Office)  
170 Admiral Boulevard  
Mississauga On L5T 2N6  
CANADA  
TEL: (905) 362 9707

#### U. S. A.

Roland Corporation U.S.  
5100 S. Eastern Avenue  
Los Angeles, CA 90040-2938,  
U. S. A.  
TEL: (323) 890 3700

As of December 10, 2005 (ROLAND)

- The AKAI MPC2000, MPC2000XL, S1000 and S3000 is a product manufactured by Akai Professional M.I. Corporation.
- All product names mentioned in this document are trademarks or registered trademarks of their respective owners.
- This document printed on Recycled Paper.



\*04128212-01\*

04128212

'05-12-KS

